

# Material Compatibility List

## for Exact Imaging ExactVu™ Transducers

**Material Compatibility List (MCL):** Listed Chemicals do not degrade transducer performance or safety over 2,500 reprocessing cycles (500 cycles for abdominal high level disinfectants).

**NOTE:** Microbiological efficacy of the chemicals on the MCL has not been evaluated by Exact Imaging. Please refer to chemical manufacturers' claims.

Type of Chemical	Chemical Name	Manufacturer	Material Compatibility		
			ExactVu™ Transducers		
			EV9C	EV29L	EV5C
Cleaners	Cidezyme	Advanced Sterilization Products	✓	✓	✓
	Enzol	Advanced Sterilization Products	✓	✓	✓
	Aniosyme X3	Laboratories Anios	NC	✓	✓
	Aniosyme DD1	Laboratories Anios	NC	✓	✓
	Revital-Ox Cleaner	Steris	NC	✓	✓
	Transeptic Spray	Parker Labs	NT	NT	✓
High Level Disinfectants	Aldahol 1.8	Olympus America	NT	✓	NT
	Anioxyde 1000	Laboratories Anios	NC	✓	✓

	<b>Cidex Activated Dialdehyde</b>	Advanced Sterilization Products			
	<b>Cidex OPA</b>	Advanced Sterilization Products			
	<b>Metricide Activated Dialdehyde</b>	Metrex Research Inc			
	<b>Revital-Ox Resert</b>	Steris	NC		
	<b>RelyOn PeraSafe</b>	Dupont	NT		NT

<b>Wipes/Sprays</b>	<b>Acryl-des</b>	Schulke			
	<b>Cleanisept Wipes</b>	Dr. Schumacher GmbH			
	<b>Cleanisept Wipes Forte</b>	Dr. Schumacher GmbH			
	<b>Incidin Foam</b>	Ecolab	NT		
	<b>Tristel Trio</b>	Tristel			
	<b>Tristel Duo</b>	Tristel			
	<b>Surfa'safe</b>	Laboratories Anios	NT		
	<b>Wip'Anios</b>	Laboratories Anios	NT		
	<b>Clinell Universal Wipes</b>	GAMA Healthcare	NT		
	<b>Mikrobac® Tissues</b>	BODE Chemie GmbH	NT		
	<b>mikrozyd® universal wipes</b>	schülke	NT		
	<b>mikrozyd® sensitive wipes premium</b>	schülke	NT		

**Legend:**

NC = Not Compatible

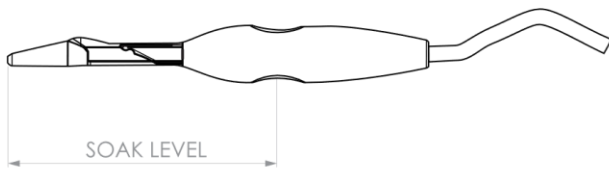
NT = Not Tested

Refer to IFU (Care, Cleaning, and Use Guide for EV29L/EV9C/EV5C) for further instructions

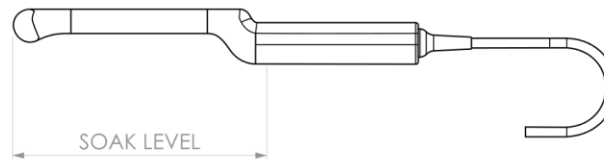
Over time, cleaning and disinfection may cause discoloration.  
Discoloration does not affect the performance of the transducer.

**Soaking Instructions for ExactVu Transducers:**

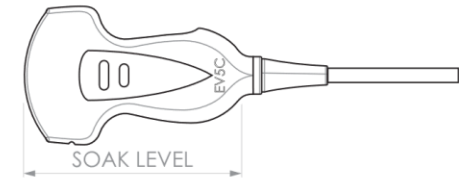
The images below show the *soak level* for the transducers.



**Figure 1: EV29L Soak Level**



**Figure 2: EV9C Soak Level**



**Figure 3: EV5C Soak Level**

**CAUTION**

EN-C25



---

Do not immerse the transducer beyond its soak level.

---

Rev 2.3

For any further questions about *Cleaning and Disinfection*  
with the Exact Imaging transducers,  
please contact [support@exactimaging.com](mailto:support@exactimaging.com).